

# Project Background

The site is located 4555 N. Peyton Place in Clarkdale, Arizona. Clarkdale, Arizona is considered to be within the county boundaries of Yavapai County. Figures 1-1, 1-2, and 1-3 below depict the location of Yavapai County, the location of Clarkdale, Arizona, and an aerial view of the project site.

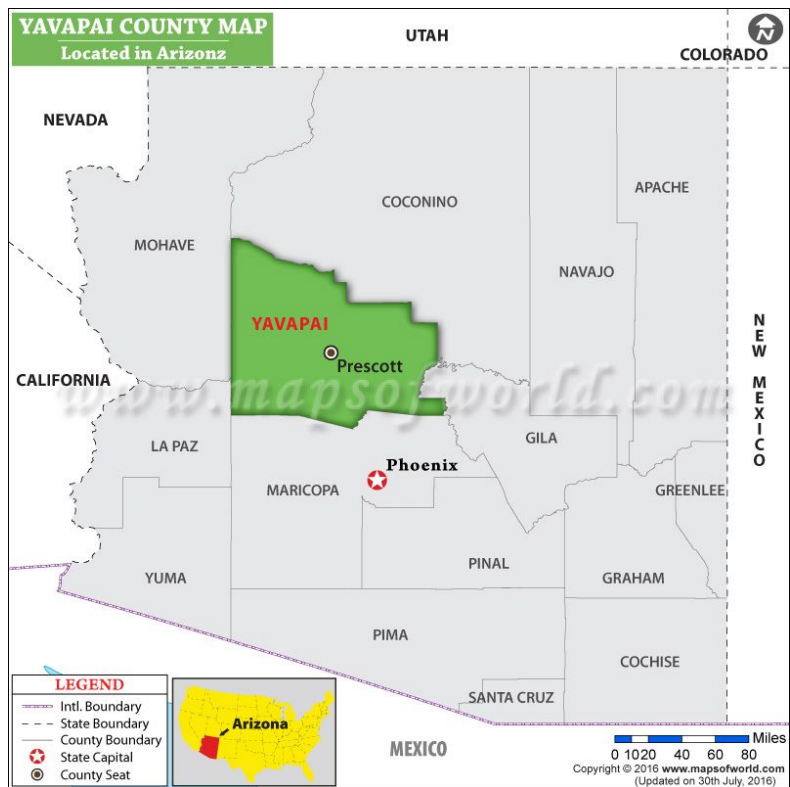


Figure 1-1: Location Map of Yavapai County, Arizona. [1]

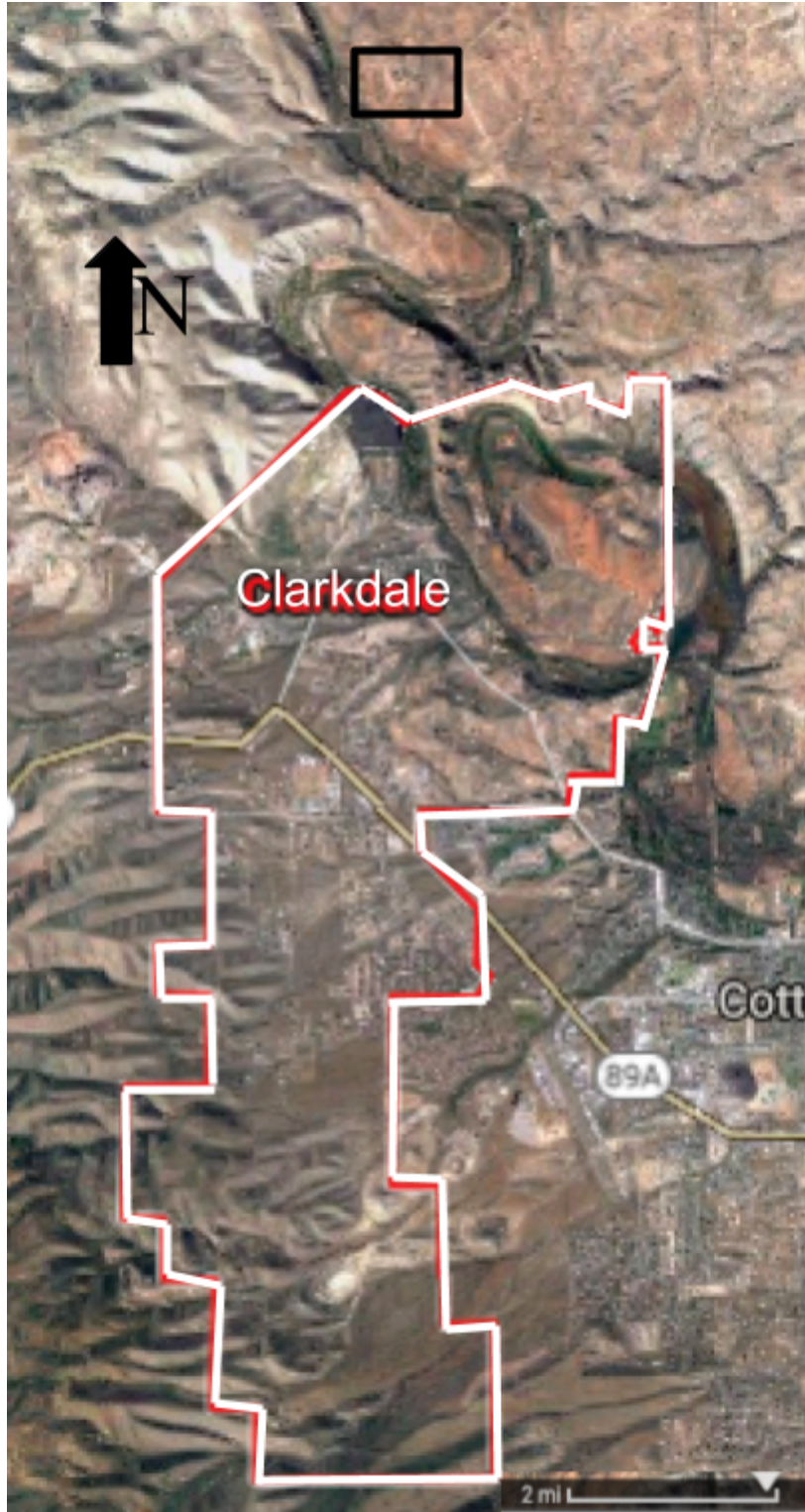


Figure 1-2: Location of the Town of Clarkdale in relation to Cottonwood, AZ Black box depicts where the site is located on the map.



Figure 1-3: Aerial view of project site in relation to Verde River. The entire site is outlined in a red box.



Figure 1-4: Aerial view of the project site. The outlined area highlights the project location at the site.

The project area is approximately 250 yards squared. The area is already developed to accommodate the dogs on the property. The site currently has 10 kennels, with dimensions 10 foot by 10 foot each. The spacing is five kennels on each side with approximately 8 foot walk path in between.



Figure 1-5: A visual of the project site's pre-existing development (red) and the available space (yellow) for the site design.